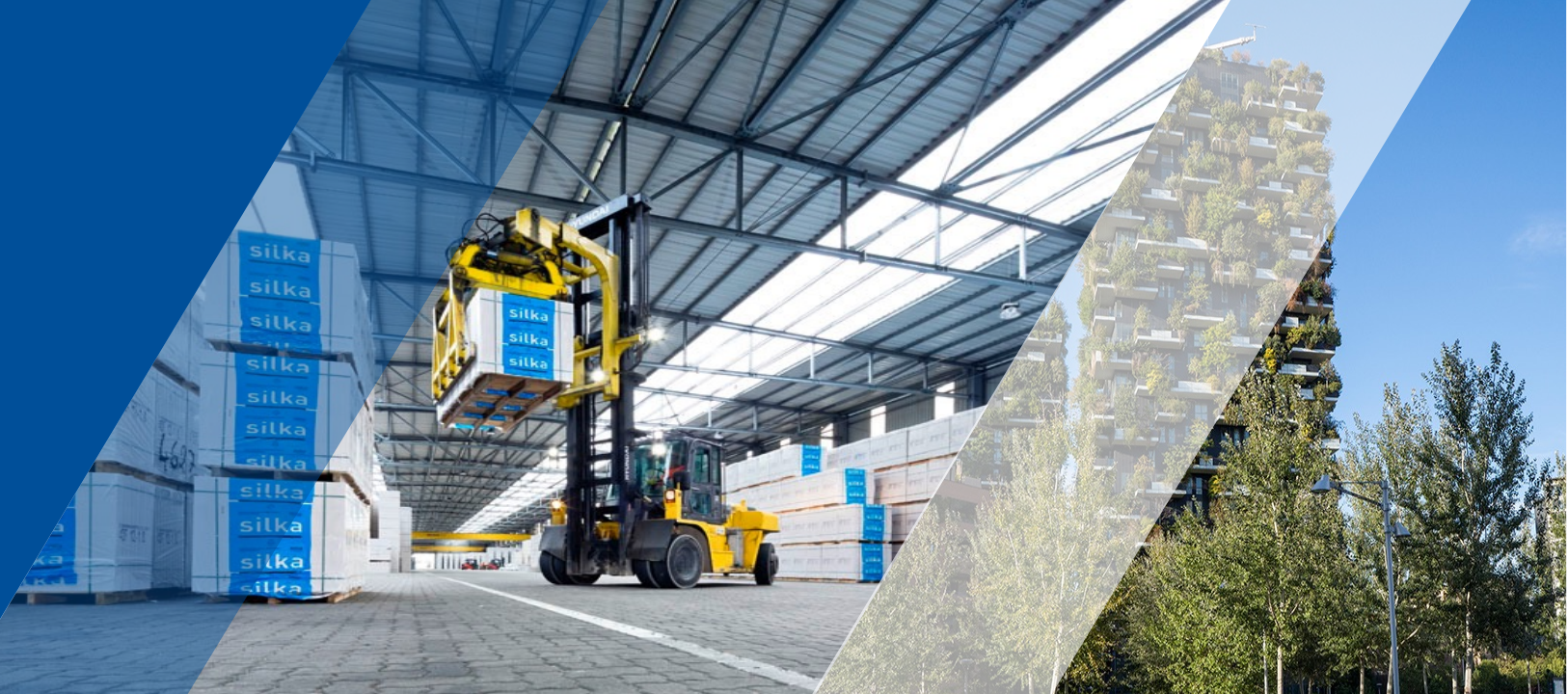


Xella

We are building a sustainable world.



Xella is a leading pan-European provider of walling solutions.

xella

#1



- # 1 European walling solutions provider
- With 22 country representations
- Founded in 1929 and headquartered in Duisburg, Germany
- 5,460 employees (headcounts) at the end of 2021
- Pioneer in **digitally supported building** processes
- Forward thinker in **sustainable & efficient solutions** for the entire house shell
- Home of high performing products & **leading brands**



- Xella Group is one of the leading, internationally operating solution provider of building materials and related industries. The success of Xella is based on strong brands in the premium segment, a superior service portfolio and a solid business model. Xella stands for best performance, premium quality, innovation and service-strength acting as a competent & reliable partner for its customers.
- Xella RO, the local subsidiary of the group, is the main player in the masonry market in the country. With the mission to sustainably contribute to the improvement of the built environment in Romania, Xella RO operates in three factories located in Ploiesti, Deva and Oradea.
- In a constantly developing market, we offer customized masonry solutions, thus contributing to the improvement of the built environment. Xella Romania has two masonry brands in its portfolio: Ytong and Macon. The company also owns the brands Multipor, thermal insulation solution, and Silka, calcium silicate blocks.

Xella offers high-performing and sustainable building materials. From simple blocks to complete wall system delivery.



Autoclaved Aerated Concrete

- Blocks, elements & panels consist of natural raw materials (sand, lime and cement)
- Porous structure with excellent structural properties



Combined structural and thermal insulation properties

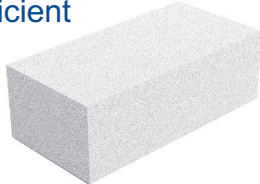


Autoclaved Aerated Concrete

- The best-selling Romanian AAC brand
- Good quality standard at an affordable price



Fast and cost-efficient construction



Calcium Silicate

- Blocks and elements consist mainly of sand and lime
- Sand bounded through calcium silicate hydrate bonds



High loadbearing and sound insulation properties



Mineral Insulation Boards

- Ecological, mineral-based insulation material
- Special and purely mineral structure



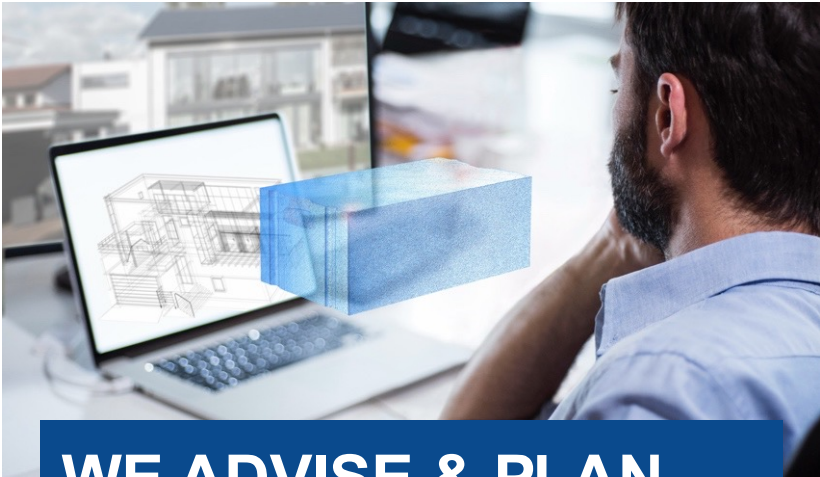
Not-flammable, for exterior and interior insulation tasks



- ✓ Cost-efficient
- ✓ Standard, large & customizable formats
- ✓ Lightweight
- ✓ High thermal & sound insulating properties
- ✓ Sustainable, durable & non-combustible

SUPERIOR PROPERTIES IN COMMON

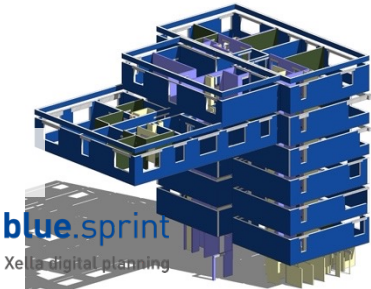
We bring integrated solutions up & down the value chain to meet our customers' needs.



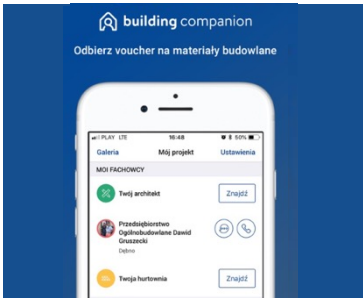
WE ADVISE & PLAN

We optimize processes and reduce errors. Up to **20%** cost and up to **30%**-time savings.

Digital/BIM



B2C Platform



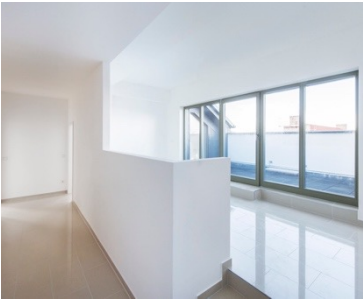
WE PRODUCE

We speed up construction: more than 3.5x faster construction with less manual labor.

Large formats



High-insulation AAC



Our digital planning solution blue.sprint: increased efficiency throughout the entire planning, production and construction process



blue.sprint

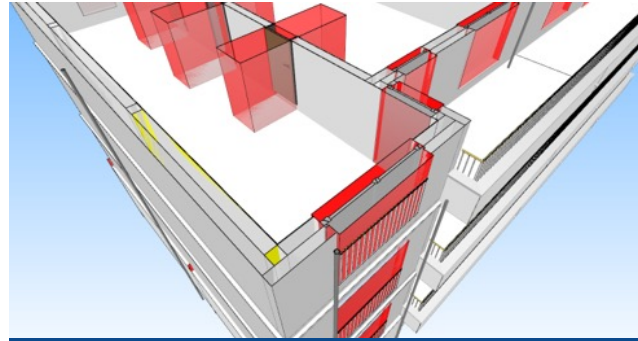
Xella digital planning



DIGITAL PLANNING



- We plan and support from early design phase to BIM (Building Information Modeling)
- Enhanced material awareness: reduction of material waste



PRODUCTION & LOGISTICS



- Production directly from the IFC (Industry Foundation Classes) model, the open standard format for BIM
- Seamless and cost-efficient order and supply chain through digital interfaces



CONSTRUCTION PROCESS



- Just-in-time delivery: “tidy” and organized construction site
- Construction time: simpler and faster wall, ceiling and roof construction

Xella's ESG Roadmap is Based on Three Main Pillars



Further **decrease CO₂ emissions** across all operations and along the value chain



Develop **circularity** of our products and reuse of production leftovers



Provide **safe and inclusive working conditions**, development opportunities and **gender diversity**



ESG deeply rooted in our DNA and part of Xella's decision making

Striving for innovation: Technology & Research Center oriented towards delivering new products & processes



- Xella is the only European company in the building materials industry to operate its own Technology and Research Center.
- Located near Berlin (Germany) we work on solutions to improve our products' suitability for a circular economy and on new production processes.
- We are also working on alternative uses for our products at the end of their Life Cycles, e. g. as acoustic slabs or as substitute raw materials for other construction materials.

OUR RESEARCH TEAMS ARE CONSTANTLY WORKING ON NEW PRODUCTS, OPTIMIZING PROVEN RECIPES.

Xella

#WeAreXella